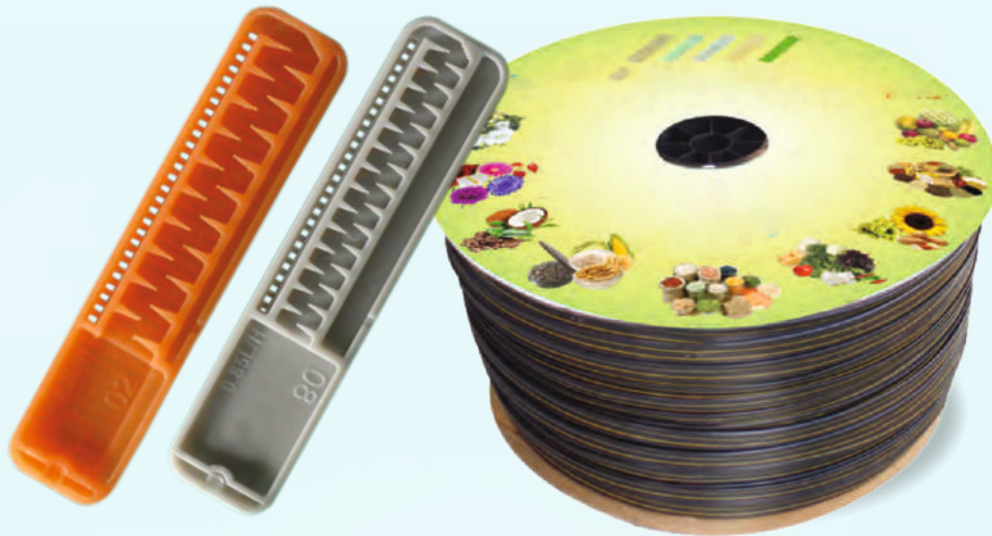


GreenAgri POLYPLAST

Excel Plus



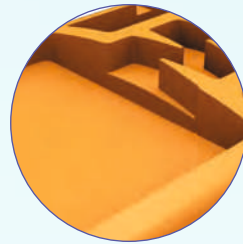
Innovative Cascade Labyrinth

Hydrodynamically designed Cascade teeth structure helps to create double flow regime and turbulent cyclone in the dripper. This helps in continuous flushing of particles.



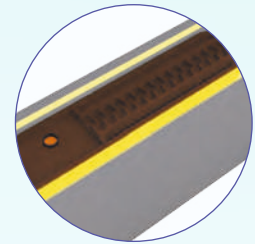
Three Dimensional Inlet Filter

Unique 3-D filtration surface (having length, width and depth) enable clog free operation even under high clog risk conditions.



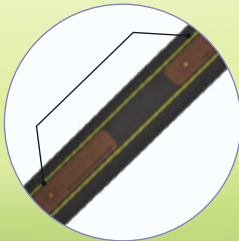
Prevention of Sand Suction

Weir structure to prevent entry of sand particles in flow path



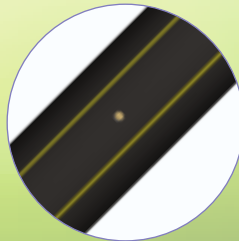
Laser Drilled Outlet Hole

Precision laser drilled outlet gives uniform and clear opening.



Manufactured With Most Modern, State-Of-The-Art Equipment.

It's computerised continuous online quality control monitors emitter spacing and precision in outlet punching for reliable quality and consistent performance.



Marked With Two Parallel Yellow Stripes 'Twin-Line'

Symbol of quality. It also helps to ensure upright positioning of the dripper to provide better clog resistance.



Available in Spool Packaging Options with Hologram

Freight saver option on carton spool Jain Turbo Excel® Plus with Hologram

GreenAgri Excel Plus

Additional Features

Excellent CVm, manufacturer's coefficient of variation

Maintains close dimensional tolerances to ensure lowest CVm and best field emission uniformity.

Quality Come First

Each batch is tested for stringent quality parameters. Conforming to Indian standard IS 13488:2008

Manufactured from special grade virgin plastic material

- Makes the tubing durable and gives best environmental stress crack resistance (ESCR).
- Twin Blue Line for Class 1 Tube
- Special blue colored Twin Line tube is supplied.

Applications

- Green Agri Excel Plus is recommended for irrigation of closely spaced row crops like sugarcane, cotton, banana, strawberry, vegetables, spices, biofuel crops, floriculture, etc.
- Recommended to use in greenhouses and nurseries.
- Suitable for landscape, shrubs and turf irrigation.
- Used for widely spaced horticultural plants like mango, citrus, guava, apple etc. in group spacings.
- Suitable for multi-seasonal applications.
- Suitable for surface as well as sub surface installations.

Specifications

- **Nominal Discharges** : 0.8, 1.2, 1.6, 2.0 and 4.0 lph at 1 kg/cm² pressure (0.20-0.90) Thickness available
- **Emitter Spacings** : Standard emitter spacing of 15, 20, 30, 40, 50, 60, 75, 90, 100, 120 and 150 cm.
- **Sizes**: Available 12, 16, 20, mm nominal diameter as per metric standard.

Operating Specifications

- Nominal operating pressure 1 kg/cm². Can be used for other pressure ratings (lower/higher) after consulting company representative and with due care for filtration
- Recommended to use specially designed emitting pipe fittings.
- Filtration recommendation 130 micron or less. Actual quality of filtration can be decided by quality of source water.
- For better clogging resistance always keep the dripper in upright position.
- For subsurface application, install vacuum breaker valves on the submain as well as on the collective drain to avoid soil suction during system shutdown.



GreenAgri Excel Plus

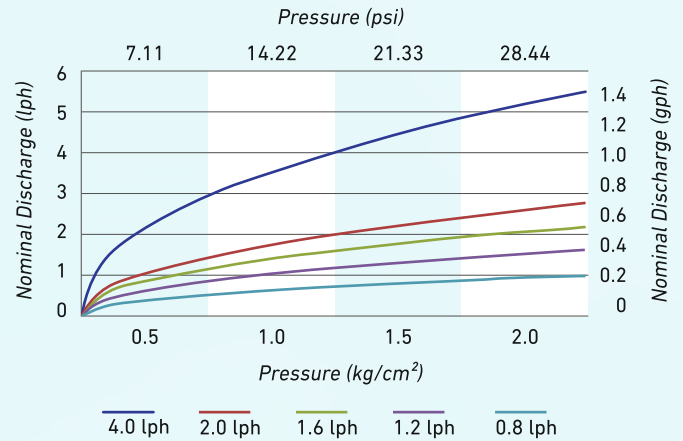
(0.20-0.90) Thickness available

Technical Specification for Tubing - Metric

Nominal Dia. (mm)	Inside Dia.(mm)	Minimum Wall Thickness (mm)			Standard Length (m)
		Class 1	Class 2	Class 3	
*12	10.5	0.4	0.6	0.8	400, 700
*16	14.2	0.5	0.7	1.0	500
16	13.9	-	0.9	1.0	500
*20	18.0	0.7	0.9	-	400, 250

* Dimensions are as per Indian Standard IS 13488:2008.

Performance Graph - GreenAgri Turbo Excel Plus



Technical Specifications for Emitter - Metric

Nominal Discharge (lph)	Emitter exponent	Flow coefficient k	Coeff. of mfg. variation, CVm	Flow path dimensions (mm)			Inlet filter area (mm²)	Size of filter openings (mm x mm)
	x			Length	Width	Depth		
0.8	0.45	0.80	3.5	16.5	0.47	0.40	3.00	0.30 x 0.40
1.2	0.45	1.18	2.0	16.1	0.62	0.64	3.44	0.27 x 0.51
1.6	0.45	1.58	2.0	17.1	0.68	0.75	5.35	0.33 x 0.60
2.0	0.46	2.00	2.0	17.4	0.80	0.84	6.28	0.31 x 0.75
4.0	0.46	4.00	2.0	18.0	1.04	1.05	5.52	0.30 x 0.60

Flow equation $q = kH^x$, q = nominal discharge, lph, H = Pressure head, kg/cm^2 , x = Emitter exponent

GreenAgri Excel Plus

Ordering Specifications

E	X	XX	XX	XXX	X	XXX	N	Color of the tube
		Nominal diameter			Pressure Rating Class for Indian Standard tubing			
	+ : Carton Spool Blank : Standard Coil	12-12mm 16-16mm 17-17mm 18-18mm 19-19mm 20-20mm 23-23mm 58-5/8" 98-9/8" 78-7/8" 138-1-3/8"	Nominal Discharge in lph x 10	Dripper Spacing in cm	For tubings other than Indian Standard- min. wall thickness x 10	Standard Coil Length in meter	N - Non pressure compensating	Blank - Standard Black with 'Twin Line' B - Brown (Landscape) W - White (Greenhouse) P - Purple (Reclaimed Water)

Example : E+16400602500N - This code refers to GreenAgri Excel Plus of 16mm nominal diameter having nominal discharge of 4 lph, emitter spaced at 60 cm, pressure rating class-2 and standard coil length of 500 m with standard black colored tubing with 'Twin Line'.

Note

- GreenAgri Turbo Excel Plus is manufactured with ID control and declared OD are nominal. If you have specific ID or OD requirement, please mention while ordering
- On request GreenAgri Turbo Excel plus can be supplied in any other wall thickness and pressure ratings.
- GreenAgri Turbo Excel Plus can be supplied in group spacing on request. Specify distance drippers in the group, distance between two groups & no. of drippers in a group (minimum three drippers) as.

